



---

# Installation Guide

**© Copyright 2019, PROCAD Software. All rights reserved.**

The contents of this document are the property of PROCAD Software, and are subject to change without notice. No part of this document may be reproduced, transmitted, transcribed, stored in a retrieval system, or translated into any language, without the written permission of PROCAD Software

PROCAD Software  
12 Elbow River Road  
Calgary, Alberta  
Canada, T3Z 2V2  
[www.procad.com](http://www.procad.com)

## Trademarks

This manual makes reference to the following products. These products are registered trademarks of their manufacturers:

- ® AutoCAD is a registered trademark of Autodesk, Inc.
- ™ DWG is a trademark of Autodesk, Inc.
- ® Windows is a registered trademark of Microsoft Corporation
- ™ SQL Server is a trademark of Microsoft Corporation
- ® Pentium is a registered trademark of Intel Corporation
- ™ ISOGEN is a trademark of Alias Ltd.
- ® Weldolet, ® Thredolet, ® Sockolet, and ® Elbolet, are registered trademarks of Bonney Forge
- ® SPOOLCAD and PROCAD 3DSMART are registered trademarks of PROCAD Software

# Table of Contents

<b>Before You Begin .....</b>	<b>5</b>
System Requirements .....	5
Media Contents .....	5
Purchased Software and Evaluation Modules .....	5
Documentation .....	6
 <b>Installing PROCAD SPOOLCAD.....</b>	 <b>7</b>
Installation Components .....	7
Application Files.....	7
Data Files .....	7
License Files .....	7
Configuration Options .....	8
Configuration 1 .....	8
Configuration 2 .....	9
Configuration 3 .....	9
Configuration 4 .....	9
Installation Procedure .....	10
Dialog 1: Autorun .....	10
Dialog 2: Welcome .....	11
Dialog 3: License Agreement .....	12
Dialog 4: Installation Process Description .....	13
Dialog 5: Application Installation Options.....	14
Dialog 5A: Local Application Installation Options.....	15
Dialog 5B: Define Application Location.....	16
Dialog 5C: Select Shortcuts Option.....	17
Dialog 6: Data File Installation Options Files .....	18
Dialog 6A: Define Data Files Location .....	19
Dialog 7: License Installation Options Files .....	20
Dialog 7A: Define License Location .....	21
Dialog 8: Choose Destination Location.....	22
Dialog 9: Review Settings .....	23
Dialog 10: Copy Files .....	24
Dialog 11: Finished.....	25
 <b>Modifying PROCAD SPOOLCAD Installation .....</b>	 <b>26</b>
Using Setup Maintenance .....	26
Changing Application Paths .....	27
Updating PROCAD SPOOLCAD V2017 .....	28



# Before You Begin

---

## System Requirements

PROCAD SPOOLCAD has the following minimum requirements:

### *System Requirements*

The system requirements for 32-bit computers:

- For Microsoft Windows 8 and Windows 7
- Intel Pentium 4 process or AMD Athlon, 3.0 GHz or greater or Intel or AMD Dual Core processor, 2 GHz or greater
- 2 GB free disk space for installation
- Direct 3D capable workstation class graphic card with 128 MB or greater

### *Additional System Requirements for 64-bit computers:*

- Windows 8 64-bit or Windows 7 64-bit
- AMD64 or Intel EM64T processor
- 2 GB RAM
- 1.6 GB free disk space for installation

PROCAD SPOOLCAD 64-bit cannot be installed on a 32-bit Windows Operating System.

### *Additional Requirements for all systems*

- 1 GB free disk space for development
- MS Visual C++ Redistributable

---

## Media Contents

### **Purchased Software and Evaluation Modules**

PROCAD SPOOLCAD installation media contains a full version of the software you purchase. In addition, each media contains evaluation versions of all other PROCAD SPOOLCAD products. You may install one or more of the evaluation modules as required.

## Documentation

The installation media contains PDF copies of all PROCAD SPOOLCAD manuals. All documentation files are located in the **Manuals** folder.

# Installing PROCAD SPOOLCAD

---

## Installation Components

There are 3 sections to the installation:

- Application Files
- Data Files
- License Files

### Application Files

The installed applications files are the files that are required for the application to run. This includes the AutoCAD blocks, stored as \*.dwg files, that are used for the insertion of some components in the applications.

Many companies decide to install the applications onto the individual workstations to not introduce extra load across the network when users are running the software. In this scenario, all workstations will require updating when patches are released containing bug fixes and new features.

### Data Files

The data files location is where the piping specification, drawing standard settings, dimensional information and other key data will be stored. Unless there is only a single user that will be using the software, it is strongly recommended that the data files always be located on the network.

The data files folder must be shared out with read permissions to all PROCAD SPOOLCAD users. Only those users that will be creating, removing, or modifying specifications and drawing standards require write access.

### License Files













The License Files installation will install not only the License Manager application, but the required license service. The location of this installation will be dictated by the type of licenses that are purchased. Concurrent licenses (also known as networked or floating licenses) must reside on a network server. Standalone licenses must reside on an individual's workstation.

Please refer to the *License Manager User Guide* for more information.

---

## Configuration Options

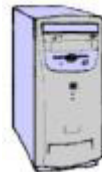
There are many configuration options available for installation. Below is a chart with some of the most common configurations:

	<i>Configuration 1</i>	<i>Configuration 2</i>	<i>Configuration 3</i>	<i>Configuration 4</i>
<i>Applications</i>				
<i>Data Files</i>				
<i>Licensing</i>				

### Legend



Workstation  
installation



Network server #2  
installation

Network server #1  
installation

### Configuration 1

This configuration represents a truly standalone installation. The user has a standalone license and will not be sharing data with any other users.

This configuration should be used when the software is being evaluated and for a single-user environment.



## Configuration 2

This configuration represents the situation where there are multiple users that need to share data, but have standalone licenses. In this scenario, the data files must first be installed onto a network location before the individual workstations have the applications and licenses installed.

This configuration is most often used for small companies that have chosen standalone licenses but must still share data.

## Configuration 3

This configuration represents the situation where it is desired to have the data and the licenses on the same network server, and only the applications reside on the workstations. In this example, the data files and licenses need to be installed on the server before the applications are installed on the individual workstations.

This configuration is most often used for small or medium companies that have concurrent or networked licenses, and prefer to keep all of the PROCAD SPOOLCAD files on one server, or when only one network server is available.

## Configuration 4

This configuration represents the situation where it is desired to have the data and the licenses installed on separate servers. In this example, the data files and licenses need to be installed on the servers before the applications are installed on the individual workstations.

This configuration is most often used for small through large companies that have concurrent or networked licenses, and have multiple servers available for selection. Commonly, one server has already been designated for licenses for other applications and a second server already contains data for the drafting department.

The four configurations above are the most common installation options encountered. However, it is possible to install the applications onto a network server as well, introducing a number of new configuration possibilities.

For all installation configurations, it is important to do the portions of the installations that you wish to have reside on any network server before the individual users' installation is completed.

## Installation Procedure

### Dialog 1: Autorun

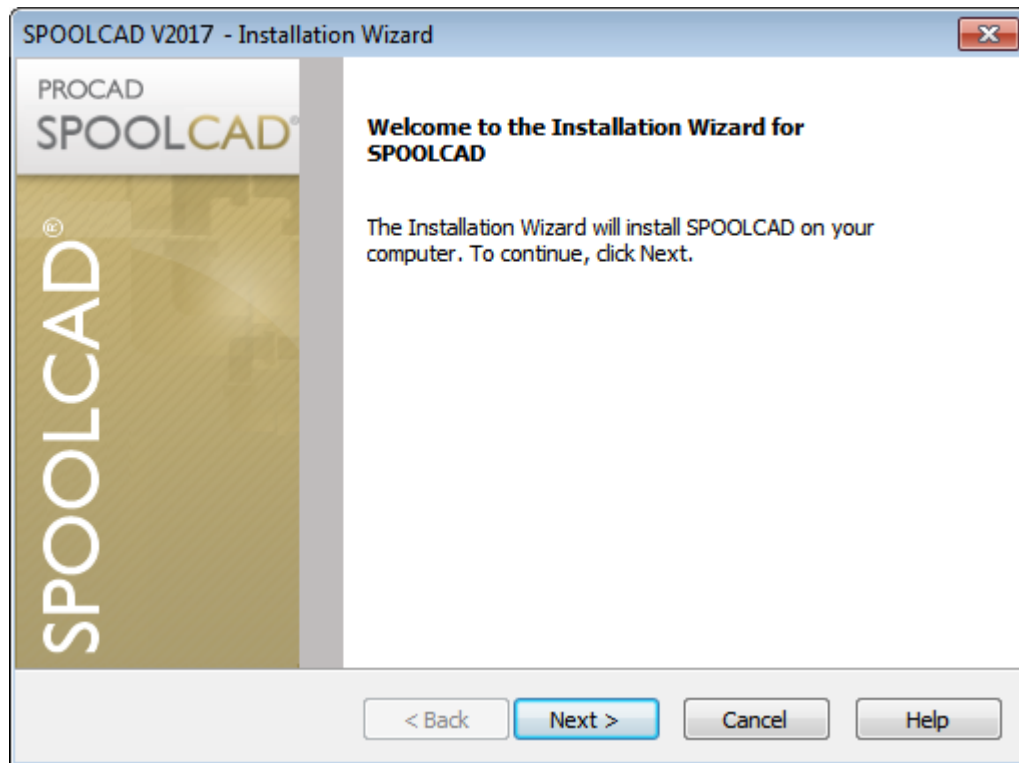
Insert the installation media.

The **PROCAD SPOOLCAD V2 Autorun** dialog box appears.



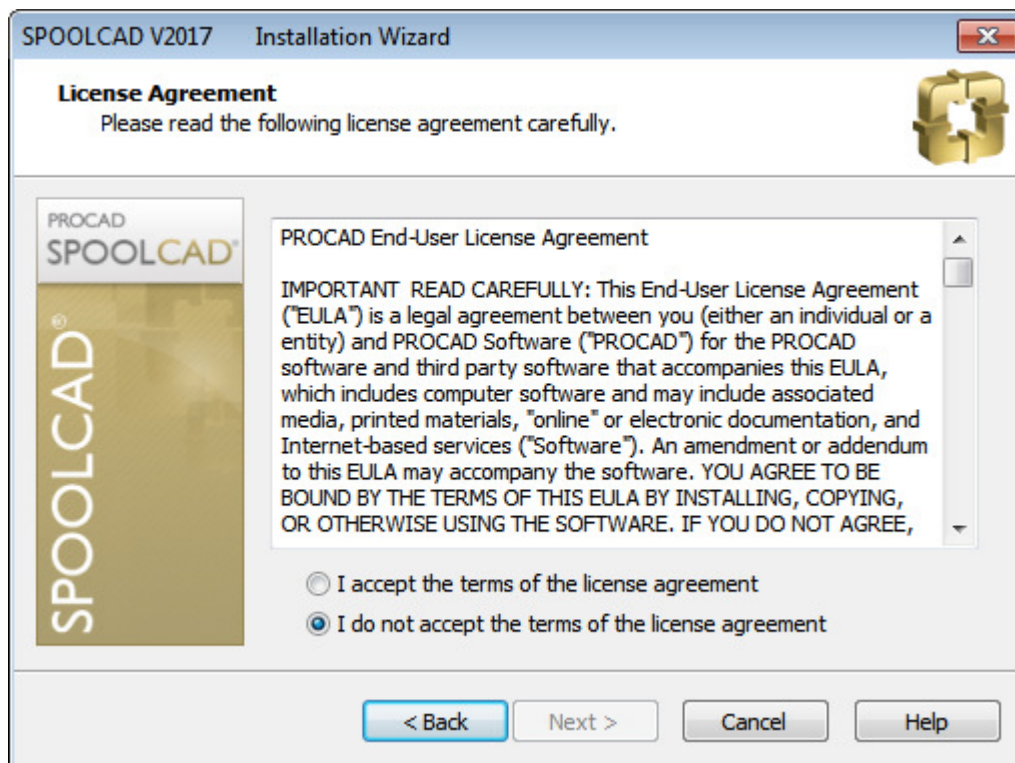
Action
Click <b>Express Install</b>
- OR
Click <b>Advanced Install</b>
Go to <b>Dialog 2: Welcome</b>

## Dialog 2: Welcome



Action
Click <b>Next</b>
Go to <b>Dialog 3: License Agreement</b>

### Dialog 3: License Agreement



#### Action

Read the license agreement.

Click **I accept the terms of the license agreement**

Click **Next**

#### Advanced Installation:

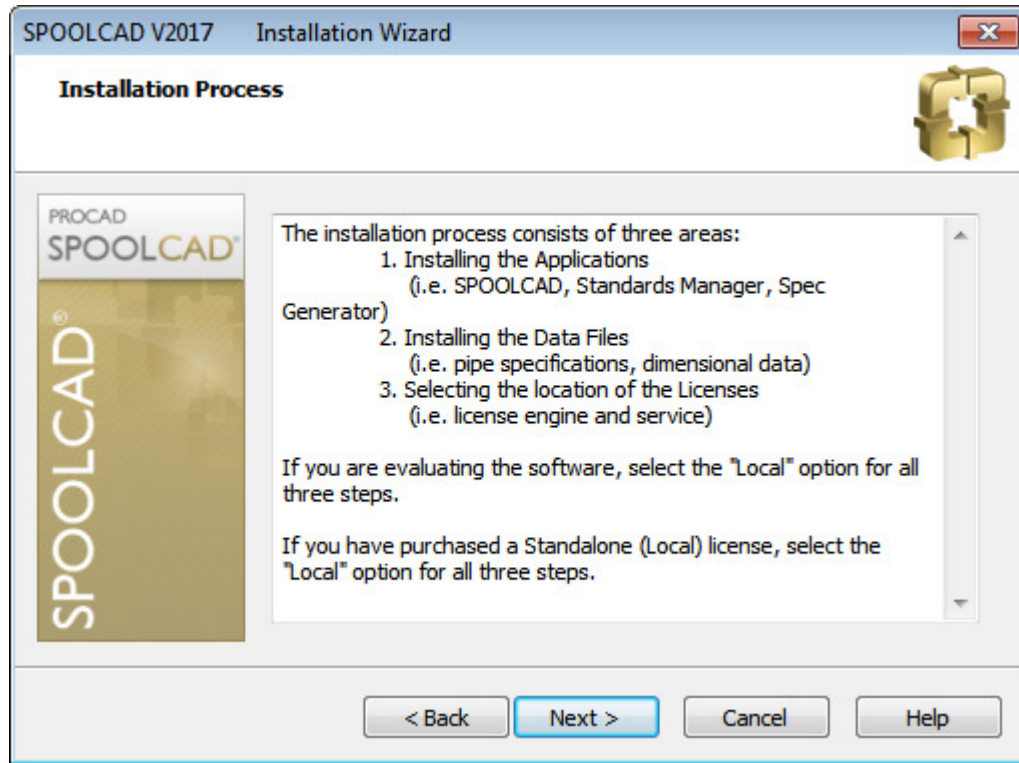
Go to **Dialog 4: Installation Process Description**

- OR -

#### Express Installation:

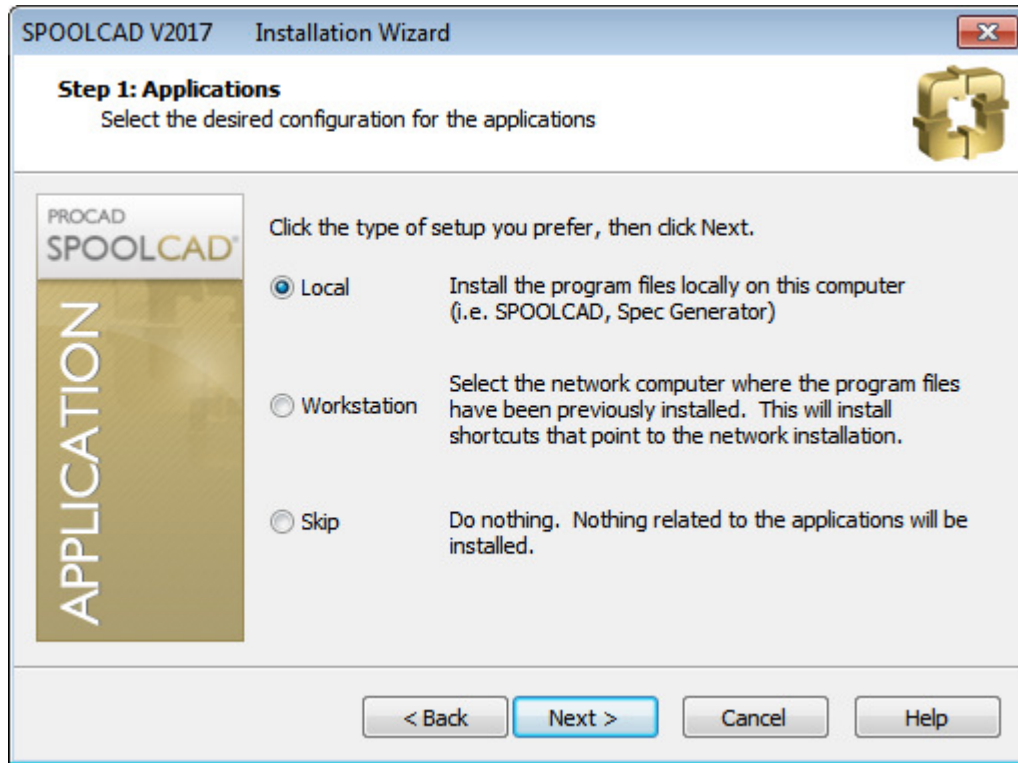
Go to **Dialog 9: Review Settings**

## Dialog 4: Installation Process Description



Action
Click <b>Next</b>
Go to <b>Dialog 5: Application Installation Options</b>

## Dialog 5: Application Installation Options



### Action

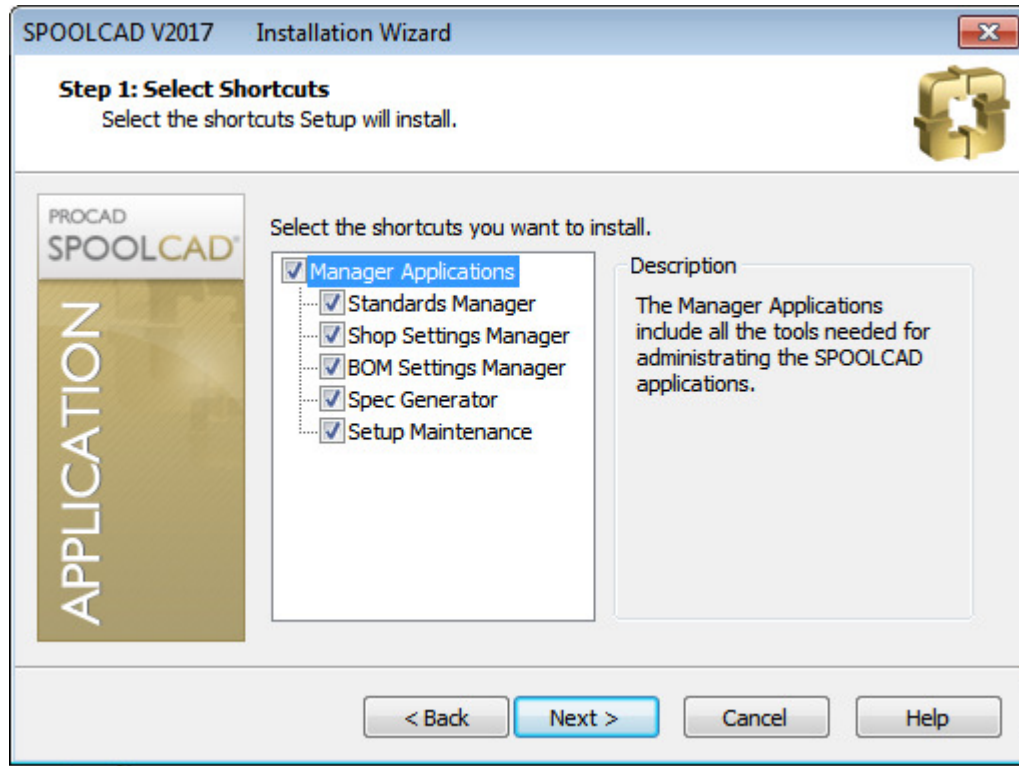
Select the desired configuration for the application files.  
Click **Next**.

For **Local**: Go to **Dialog 5A: Local Application Installation Options**

For **Workstation**: Go to **Dialog 5B: Define Application Location**

For **Skip**: Go to **Dialog 6: Data File Installation Options**

## Dialog 5A: Local Application Installation Options



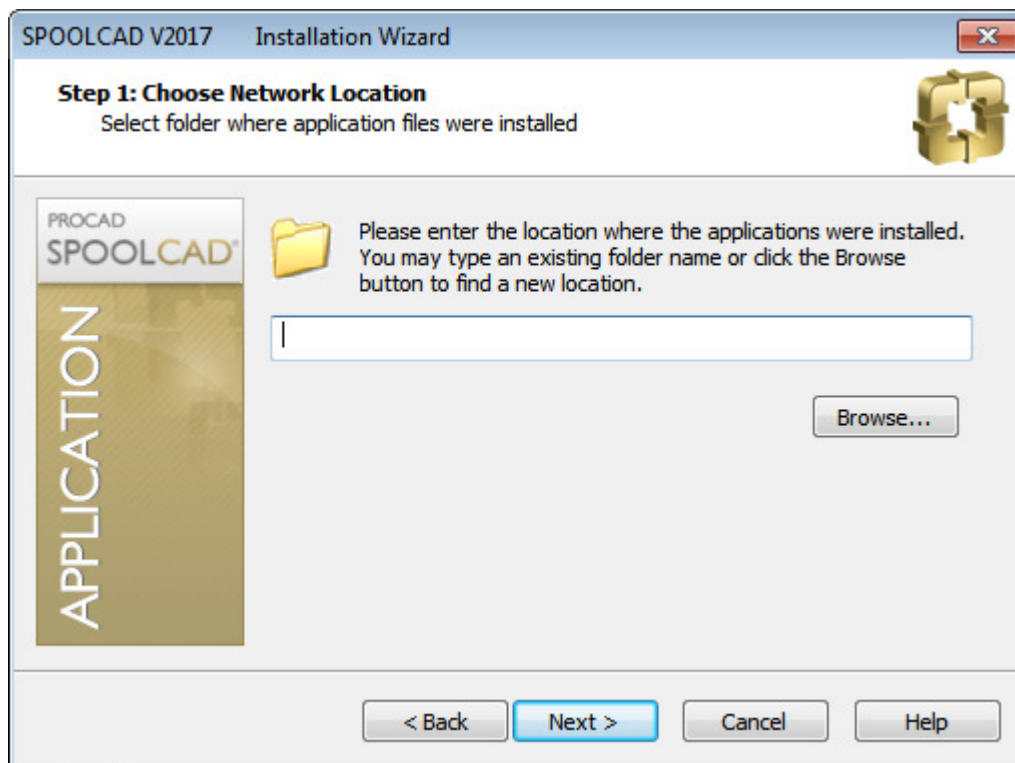
### Action

Select the shortcuts that you wish to install on the local machine.

Click **Next**.

Go to **Dialog 6: Data File Installation Options**

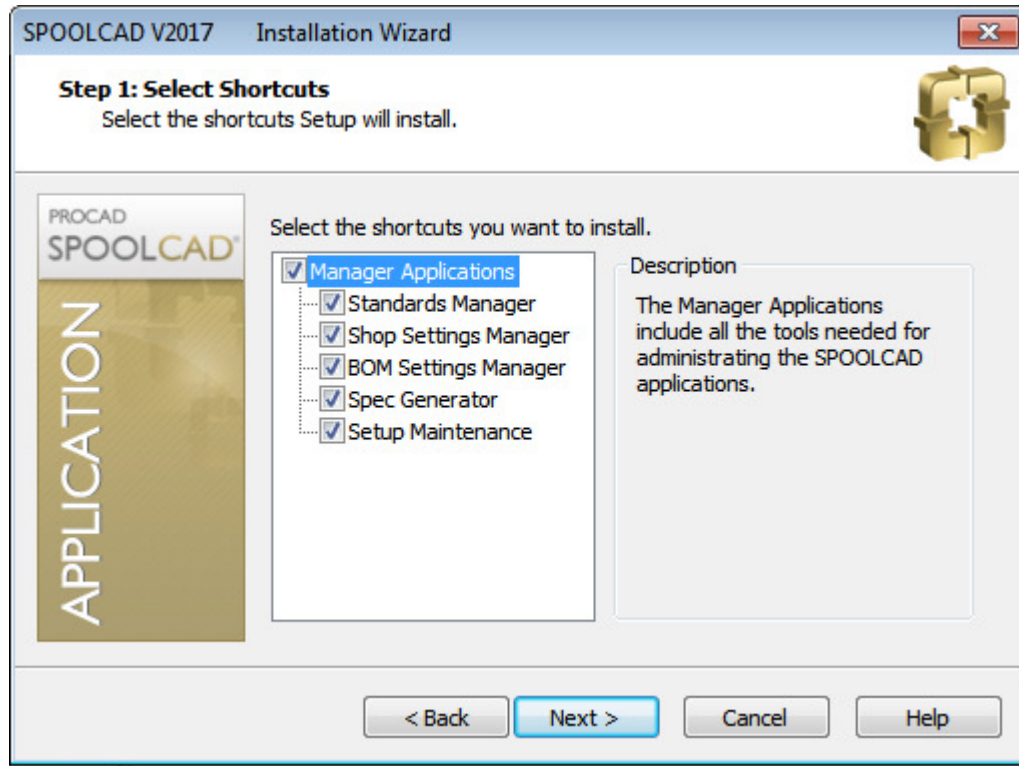
## Dialog 5B: Define Application Location



Action
Enter the location of the previously installed application files. The <b>Browse</b> button may be used to navigate to the desired folder.
Click <b>Next</b> .
Go to <b>Dialog 5C: Select Shortcuts Options</b>



## Dialog 5C: Select Shortcuts Option



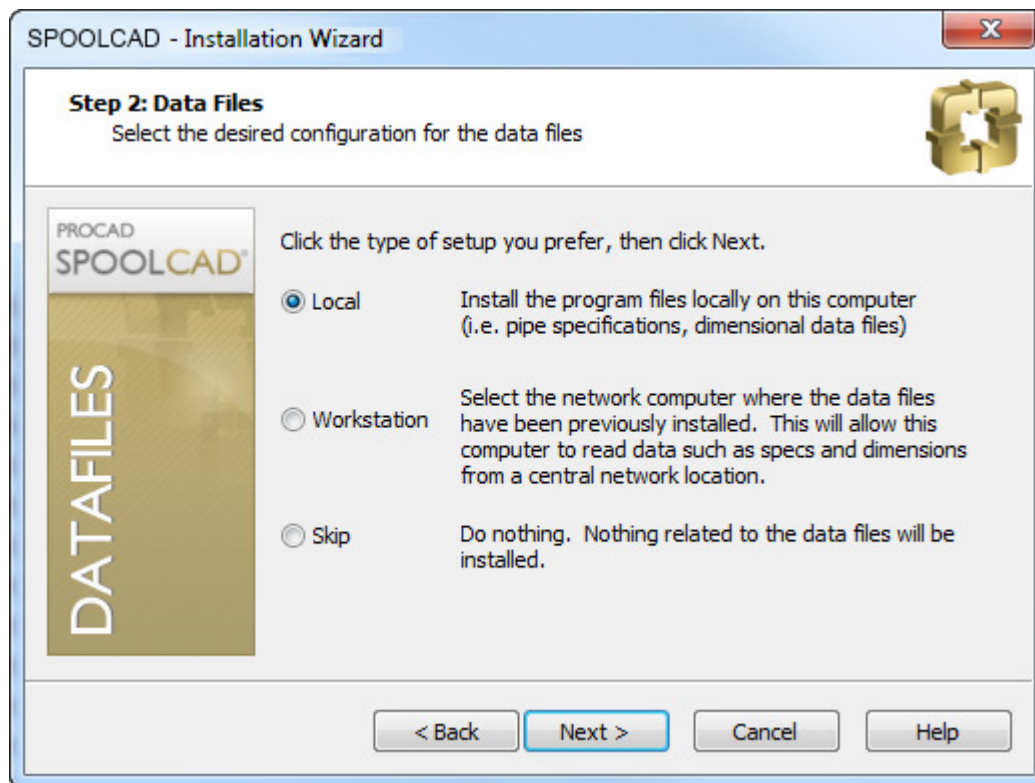
### Action

Select the shortcuts that you wish to create on the local machine.

Click **Next**.

Go to **Dialog 6: Data File Installation Options**

## Dialog 6: Data File Installation Options Files



### Action

Select the desired configuration for the data files.

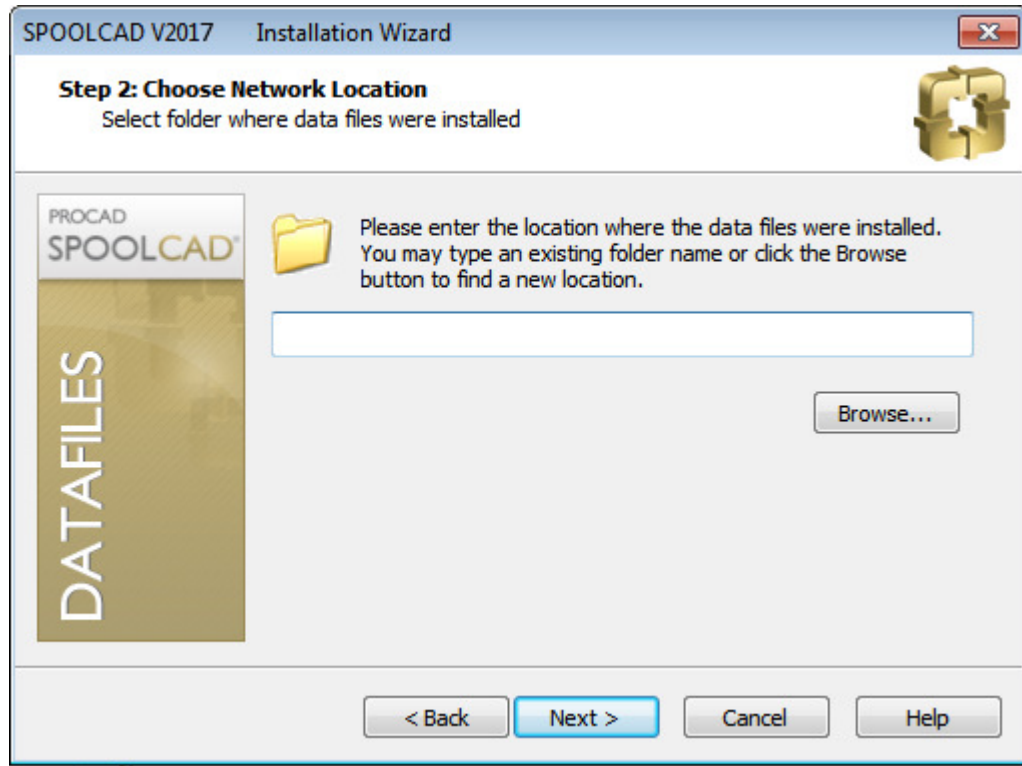
Click **Next**.

For **Local**: Go to **Dialog 7: License Installation Options**

For **Workstation**: Go to **Dialog 6A: Define Datafiles Location**

For **Skip**: Go to **Dialog 7: License Installation Options**

## Dialog 6A: Define Data Files Location



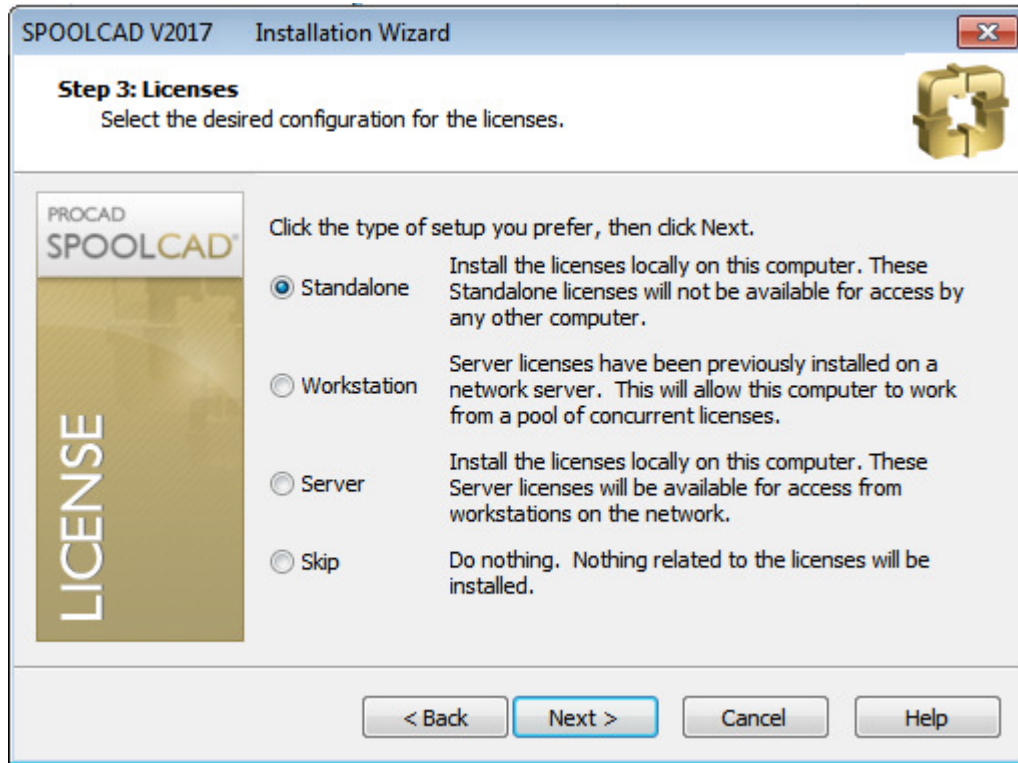
### Action

Enter the location of the previously installed data files.  
The **Browse** button may be used to navigate to the desired folder.

Click **Next**.

Go to **Dialog 7: Select Shortcuts Options**

## Dialog 7: License Installation Options Files



### Action

Select the desired configuration for the license files.

Click **Next**.

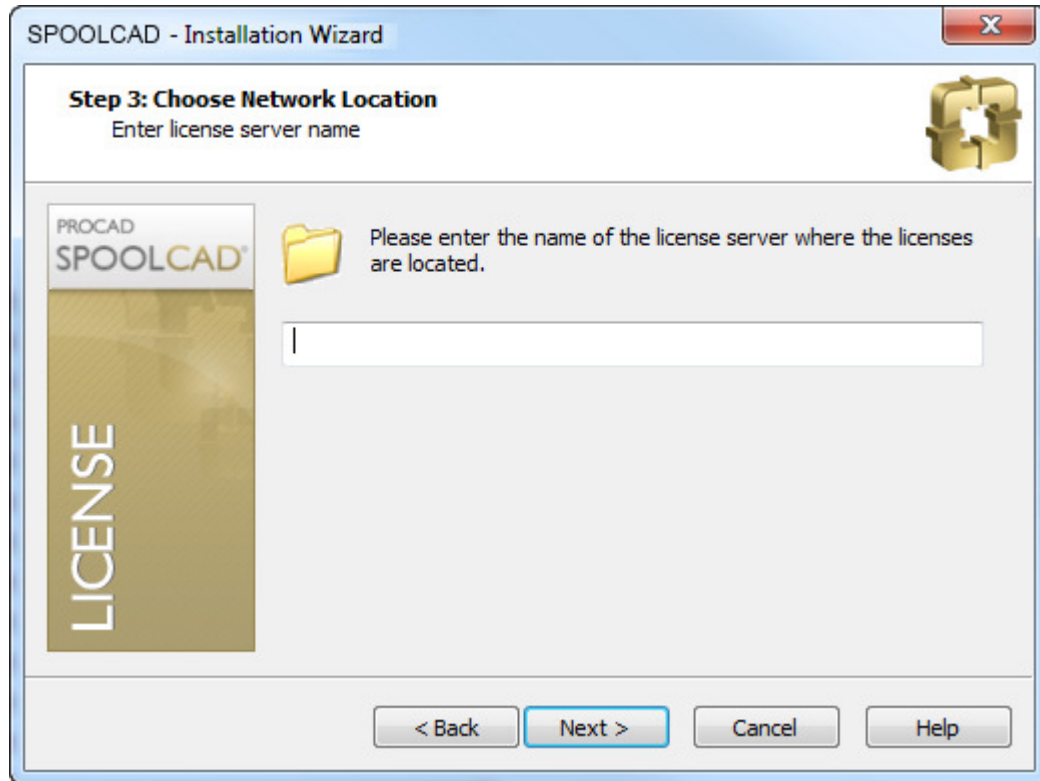
For **Standalone**: Go to **Dialog 8: Choose Destination Location**

For **Workstation**: Go to **Dialog 7A: Define License Location**

For **Server**: Go to **Dialog 8: Choose Destination Location**

For **Skip**: Go to **Dialog 8: Choose Destination Location**

## Dialog 7A: Define License Location



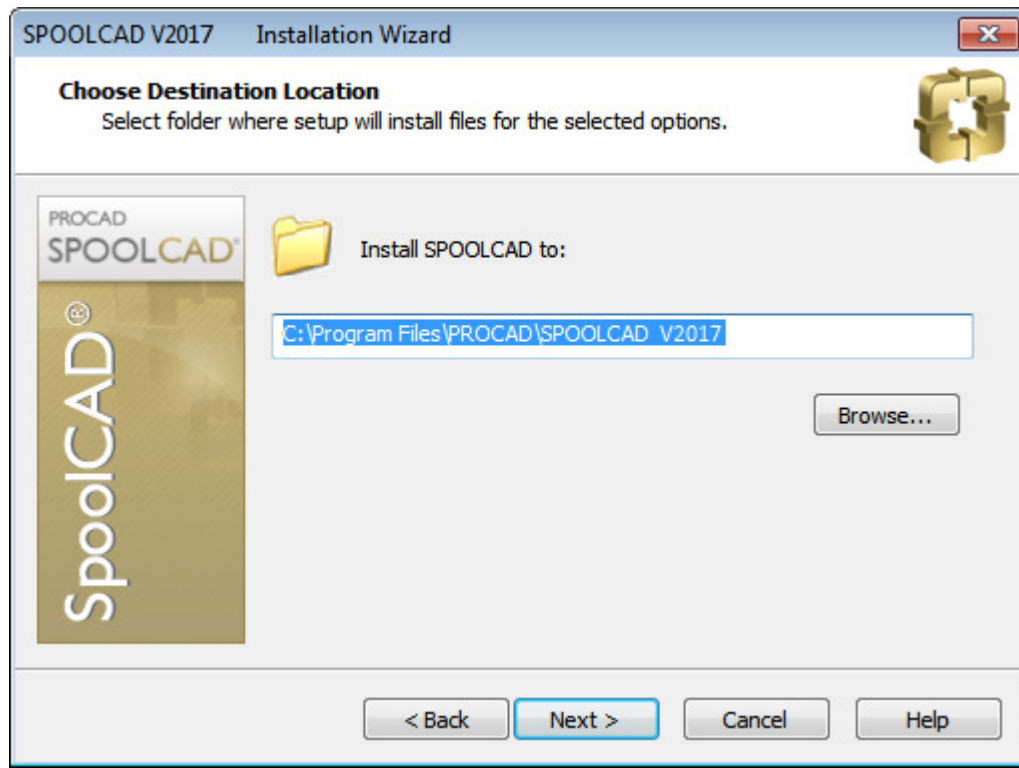
### Action

Enter the server name where the previously installed licenses are located.

Click **Next**.

Go to **Dialog 8: Choose Destination Location**

## Dialog 8: Choose Destination Location



### Action

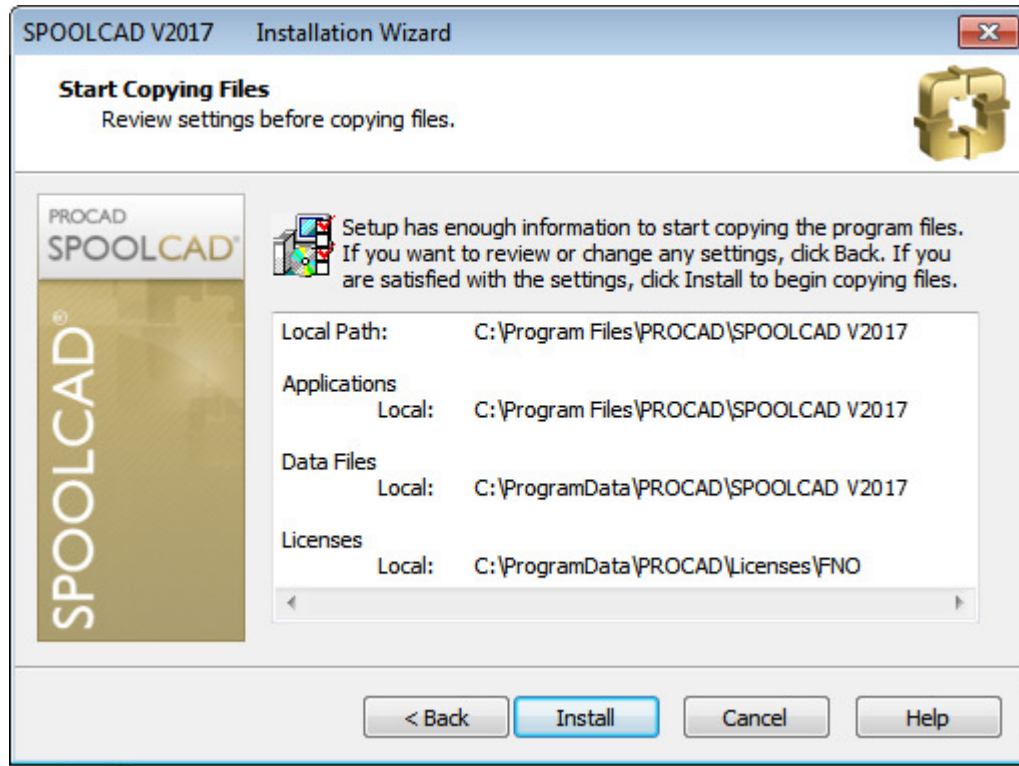
Enter the folder that will be used for all components selected with the “Local” option.

Click **Browse** to change the currently selected folder.

Click **Next**.

Go to **Dialog 9: Review Settings**.

## Dialog 9: Review Settings



### Action

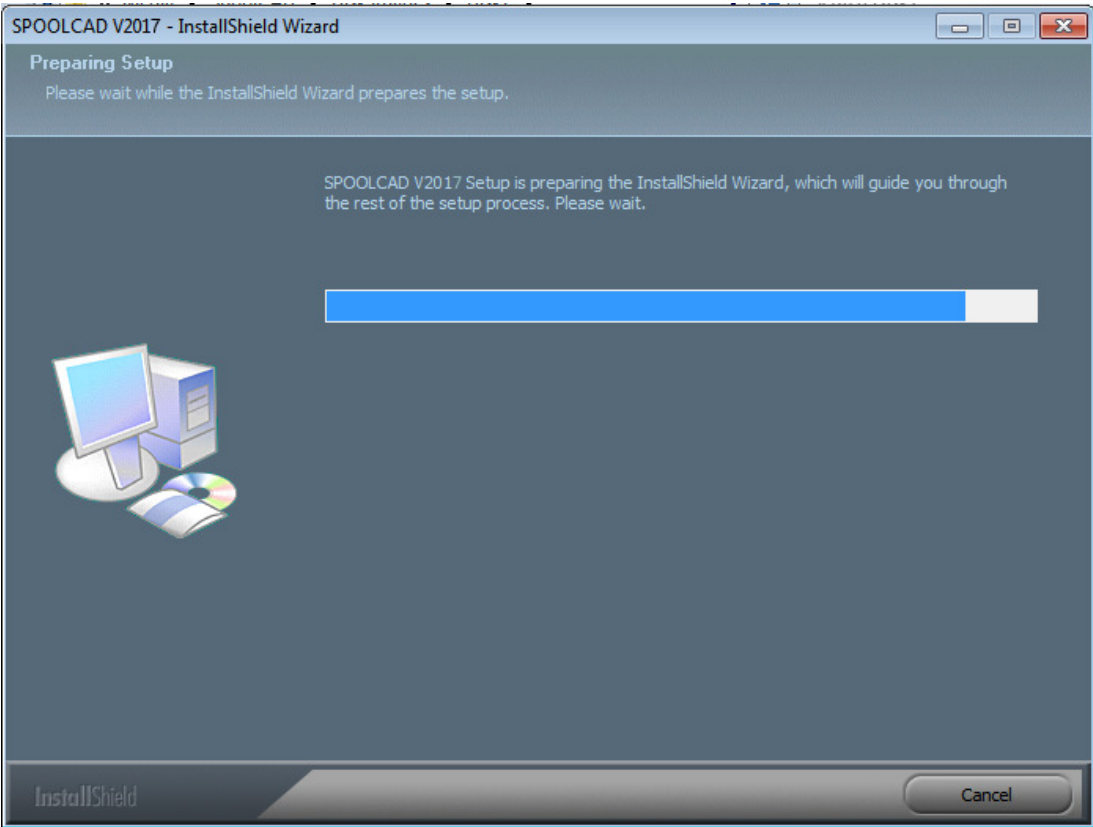
Verify that the installation paths are correct. If they are not, use the **Back** button to make the required changes.

Click **Next**.

Go to **Dialog 10: Copy Files**.

## Dialog 10: Copy Files

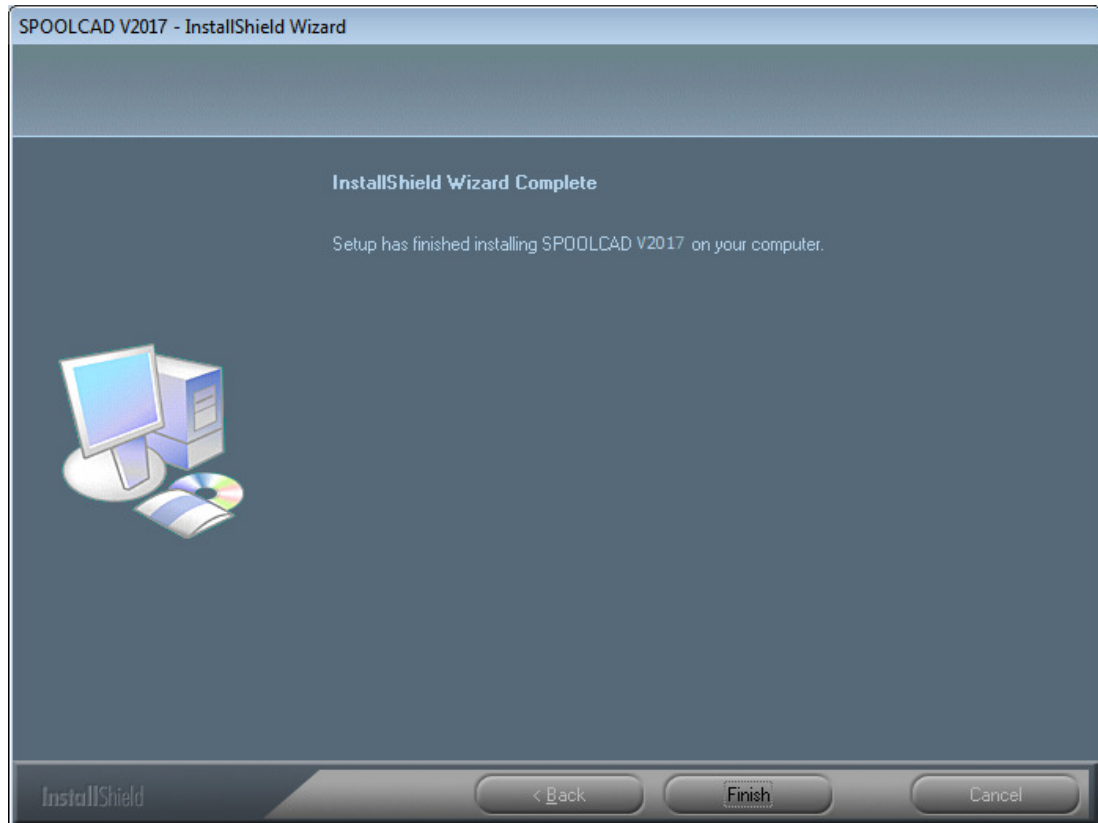
The installer begins to copy files from the CD to your system.



Action
The installer begins to copy files from the CD to your system
Go to <b>Dialog 11: Finished</b>



## Dialog 11: Finished



Action
--------

Click <b>Finish</b>
---------------------

### Requesting Licenses

Click the **License Online** button in the *License Manager* dialog box. This will bring up a web page which allows you to license PROCAD SPOOLCAD online. If you have problems with the licensing online feature, send an email addressed to: [support@procad.com](mailto:support@procad.com)

Refer also to the License Manager User Guide.

# Modifying PROCAD SPOOLCAD Installation

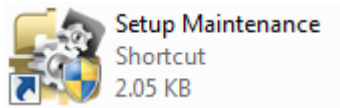
---

## Using Setup Maintenance

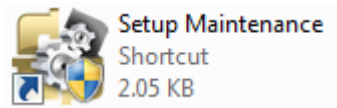
The *Setup Maintenance* dialog box is used to change application paths, and is also used to modify, repair and remove PROCAD SPOOLCAD.

*To access this dialog box...*

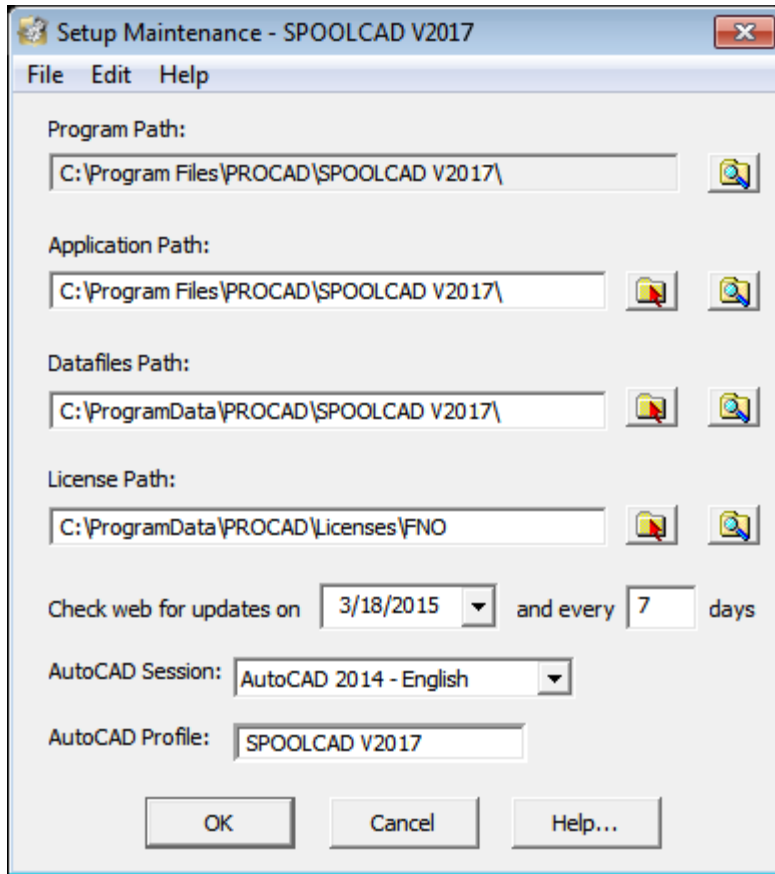
SPOOLCAD



SPOOLCAD+



In the PROCAD SPOOLCAD folder, click on the **Setup Maintenance** icon.



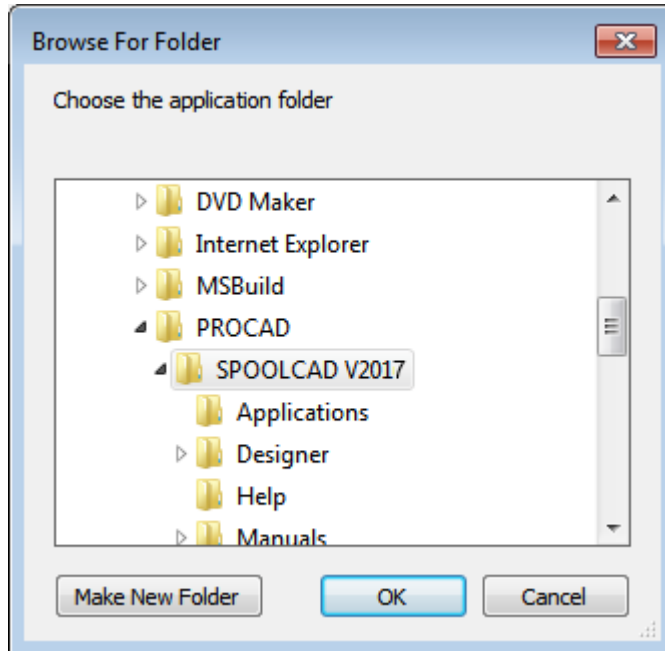
## Changing Application Paths

The user can access the Setup Maintenance to change the Network Application Path, the Datafiles Path, or the License Path.

### *To change paths...*

1. Click on the **Browse Folder** icon in the *Setup Maintenance* dialog box. 

The *Browse for Folder* dialog box appears.



2. Select the new path.
3. Click **OK** to return to the *Setup Maintenance* dialog box.
4. Do one of the following:
  - Click **OK** to save the changes and exit the *Setup Maintenance* dialog box.
  - Click **Cancel** to exit the *Setup Maintenance* dialog box without saving the changes.

---

## Updating PROCAD SPOOLCAD V2017

PROCAD Software strives to continually improve our products in order to best serve our client's needs. Updates are available regularly on our software and users are encouraged to keep their software up-to-date. Before contacting technical support with any questions, please perform an update.

### *To update PROCAD SPOOLCAD ...*

1. Close down all PROCAD SPOOLCAD applications

2. Go to <http://www.procad.com/resources/updates/>. Please read all posted instructions.
3. Download the zip or exe file to any location on your computer.
4. For the self-extracting file: double click .exe to automatically unzip and install updates on the computer
5. For the zip file: unzip the downloaded file using WinZip, or the extraction program of your choice. Run Setup.exe to install updates

Patches are cumulative and may be run on any V2017 installation.